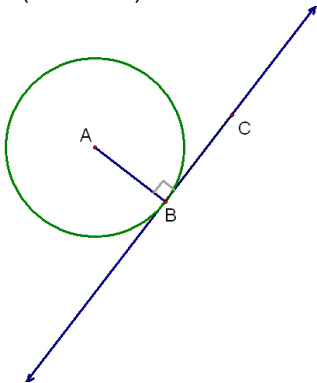


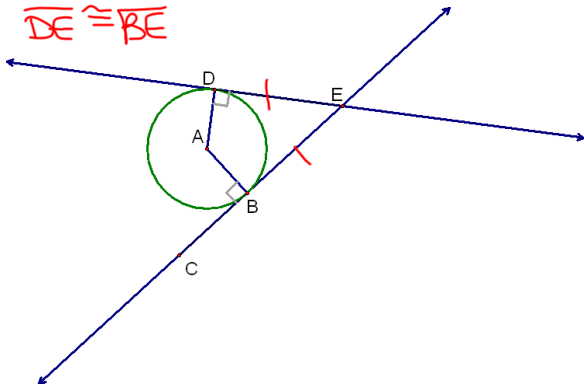
10-5 Tangents

Theorem 10-9--Radius is perpendicular to the tangent at the point of tangency

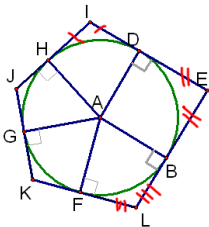
Theorem 10-10--(Converse)



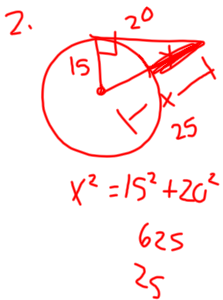
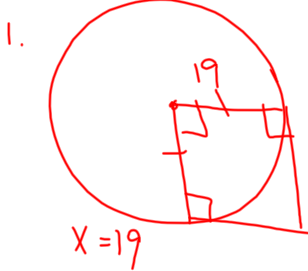
Theorem 10-11--Tangents from the same point are congruent.

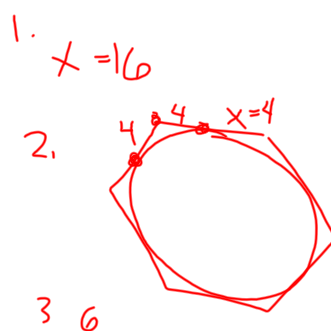
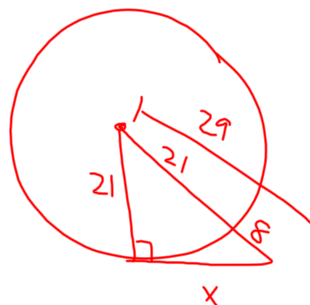


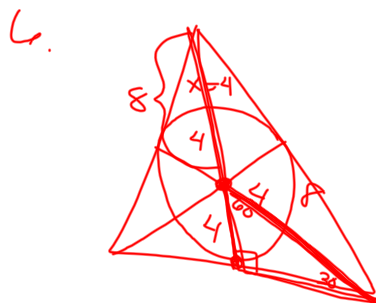
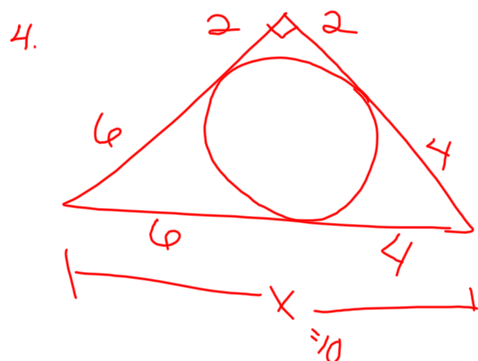
When a circle is inscribed in a polygon, all of the segments of the polygon are tangent to the circle.



p 565 W.S.







ws

HW
p556
8-19